



Using Terrain Navigator Pro

Download the demo version of TN Pro and use it to practice the basic skills presented in this lesson.

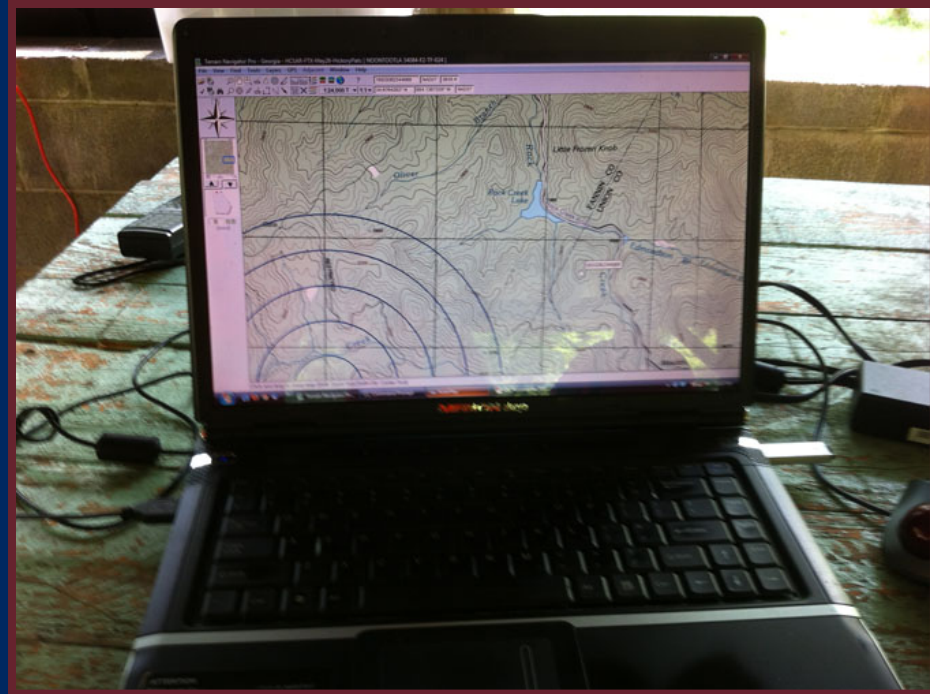
<http://www.maptech.com/support/downloads.cfm>

Terrain Navigator Pro

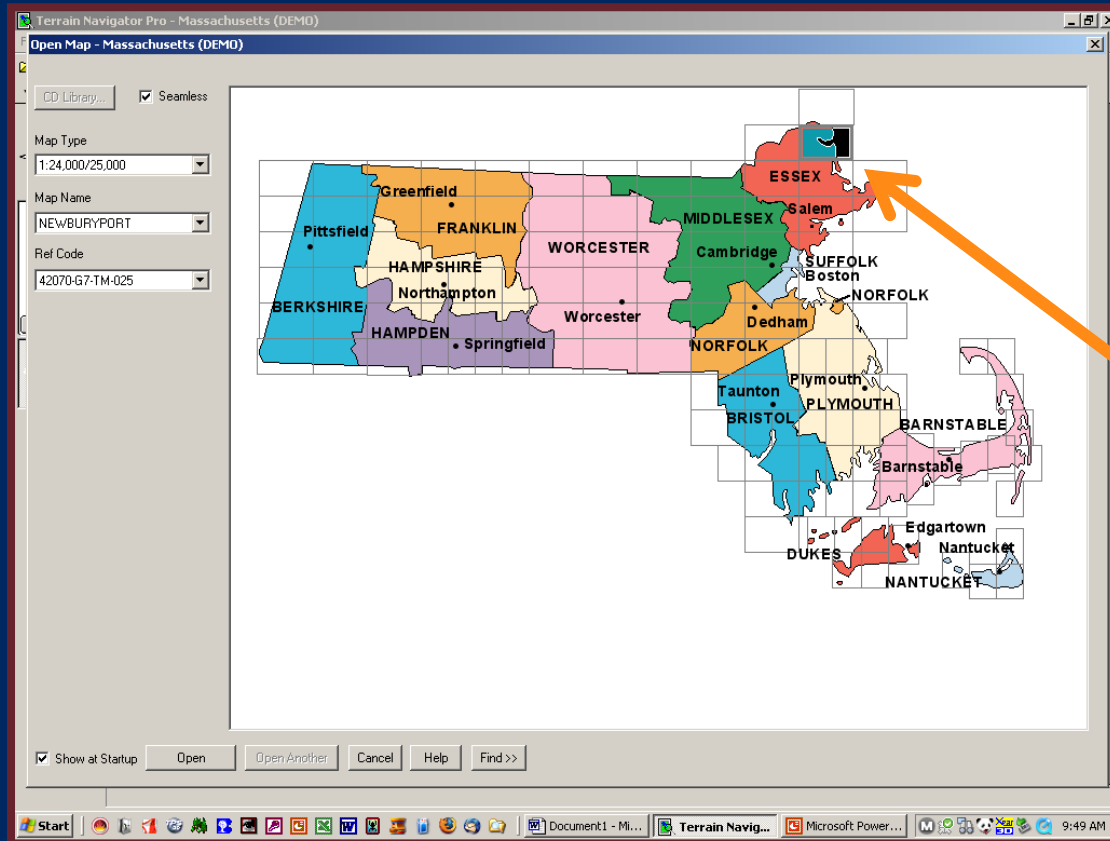
- Objectives
 - Startup & Settings
 - Selecting a Map
 - Basic Settings
 - Finding Locations
 - Creating & Modifying Markers
 - Uploading & Downloading GPS Data
 - Printing Maps
 - Saving a Map Project
 - Tips

Startup

- Two Options to load maps
 - Select Map from the startup screen
 - Use find menu to locate points of interest



Startup Option 1 – Open Map

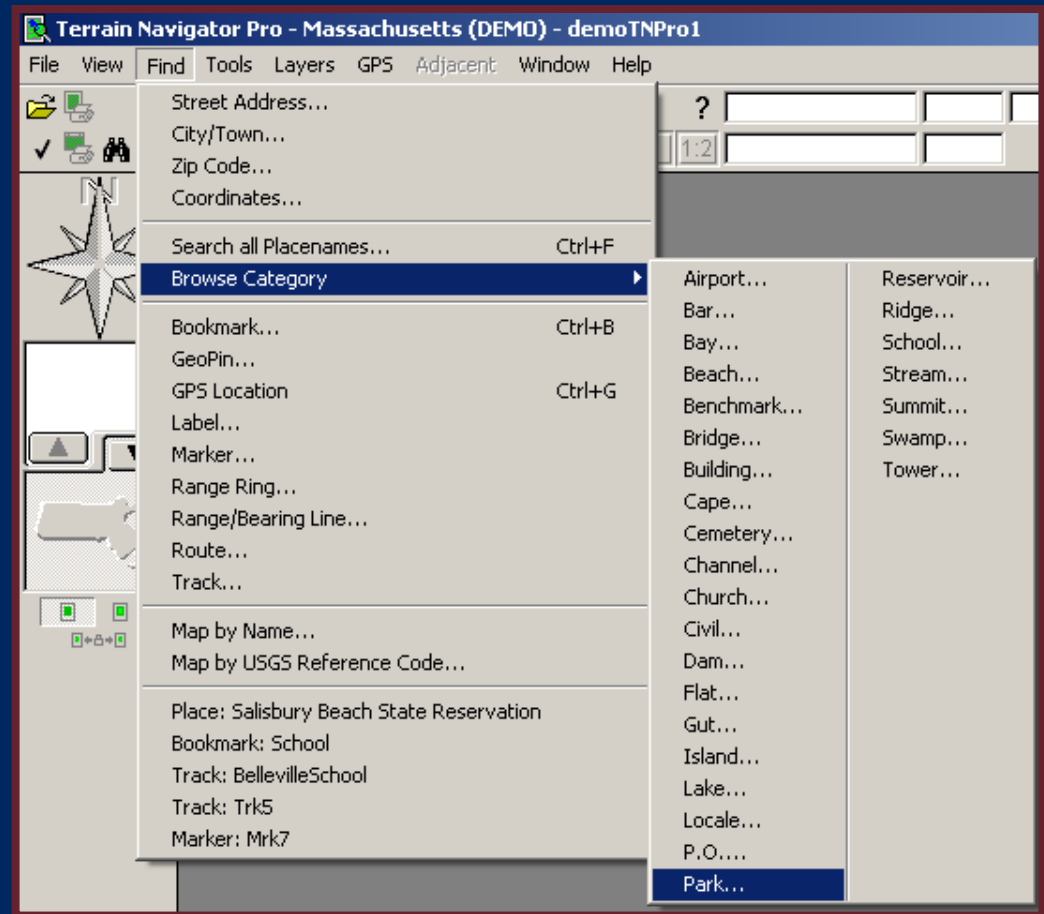


- Open program
- Locate desired Map Sheet
- Double-click to open

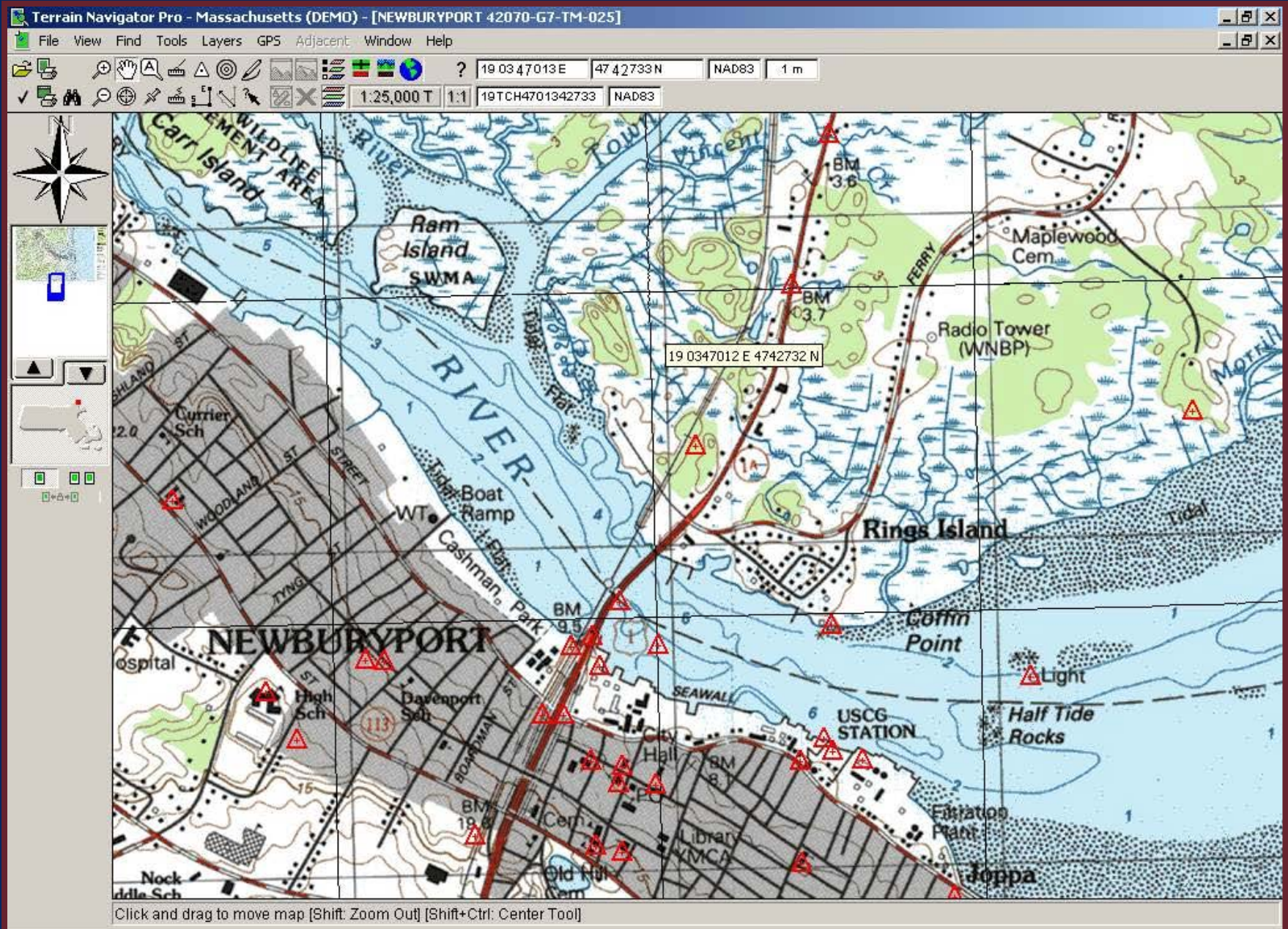
NEWBURYPORT

Start Up – Second Choice

- Select *Cancel* on the startup screen
- Go to *Find* Menu
- Multiple Options
 - Search by Address, City, ZIP, Coordinates and more
 - Select *City/Town* and enter “Newburyport”, then click *Open*

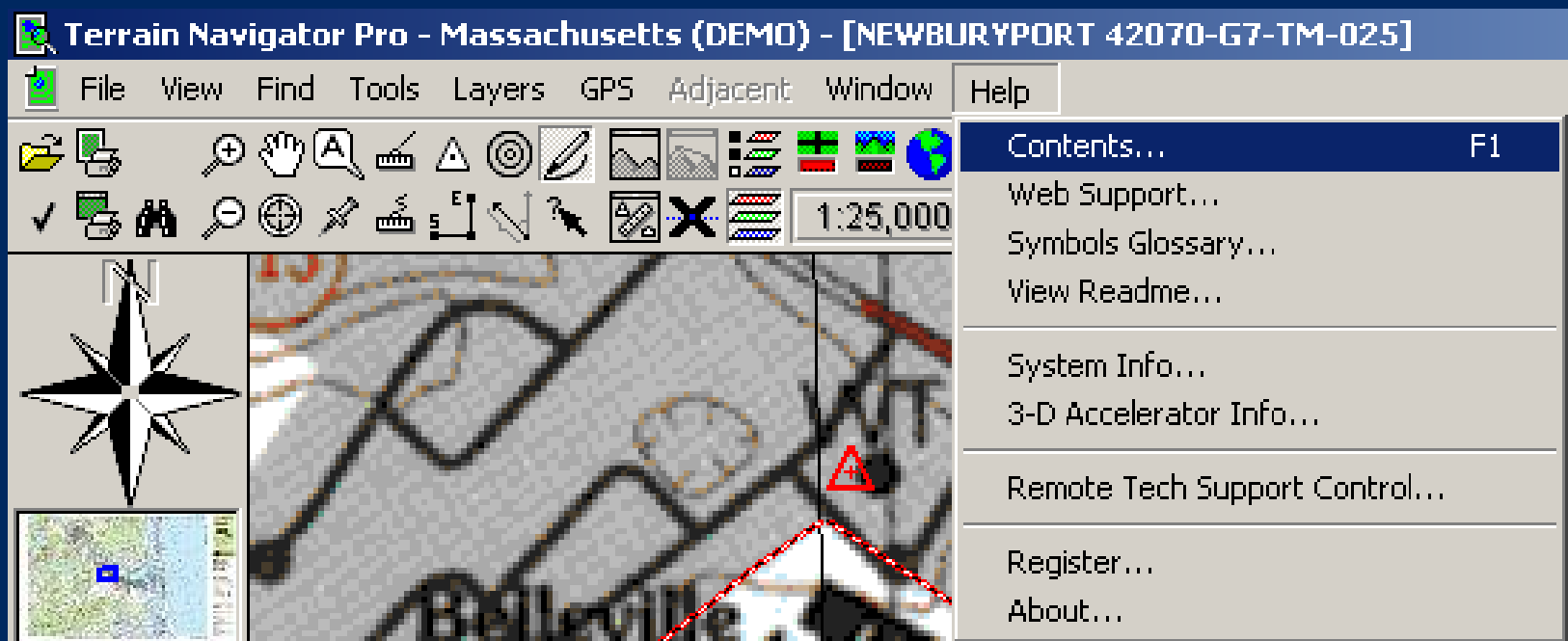


Main Screen



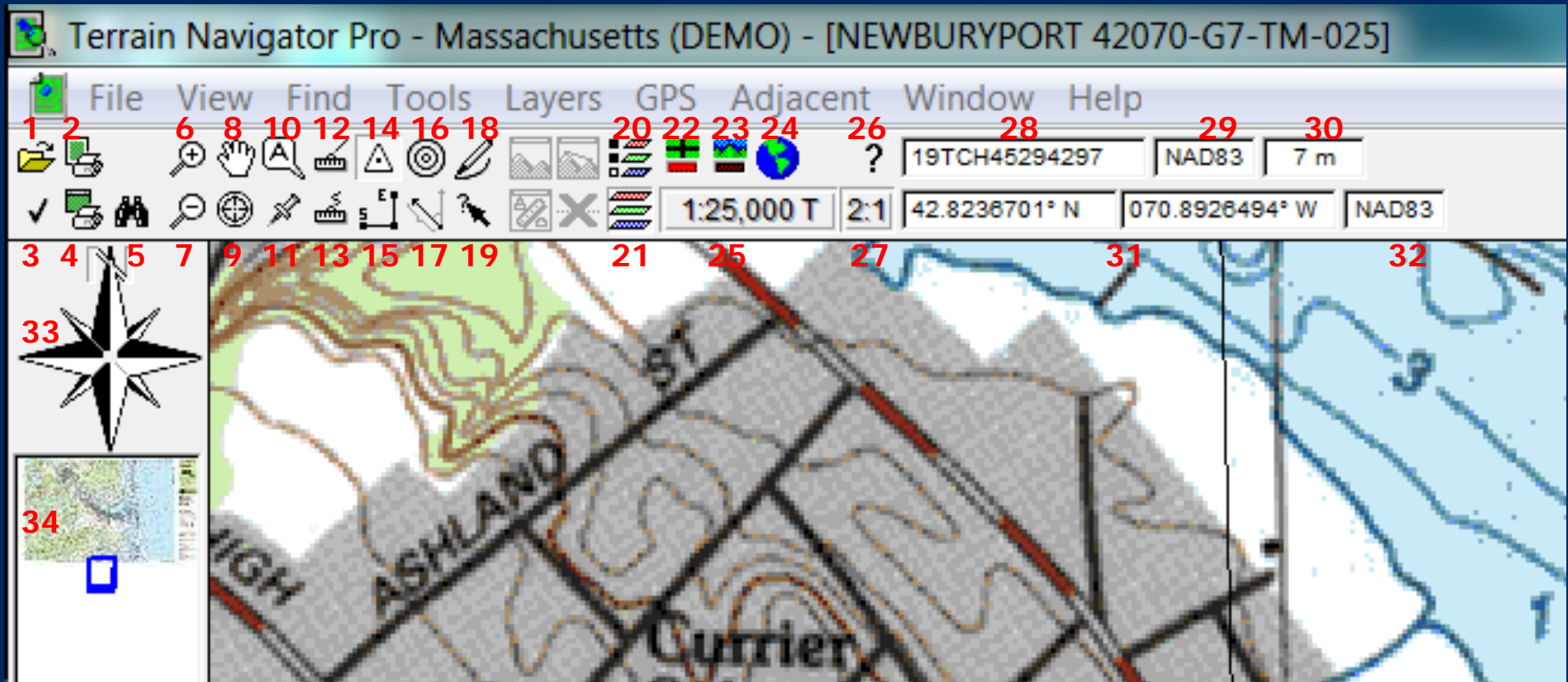
Help Function

- F1 key will bring up index to Help at any time.
- Type in key word if you get stuck.



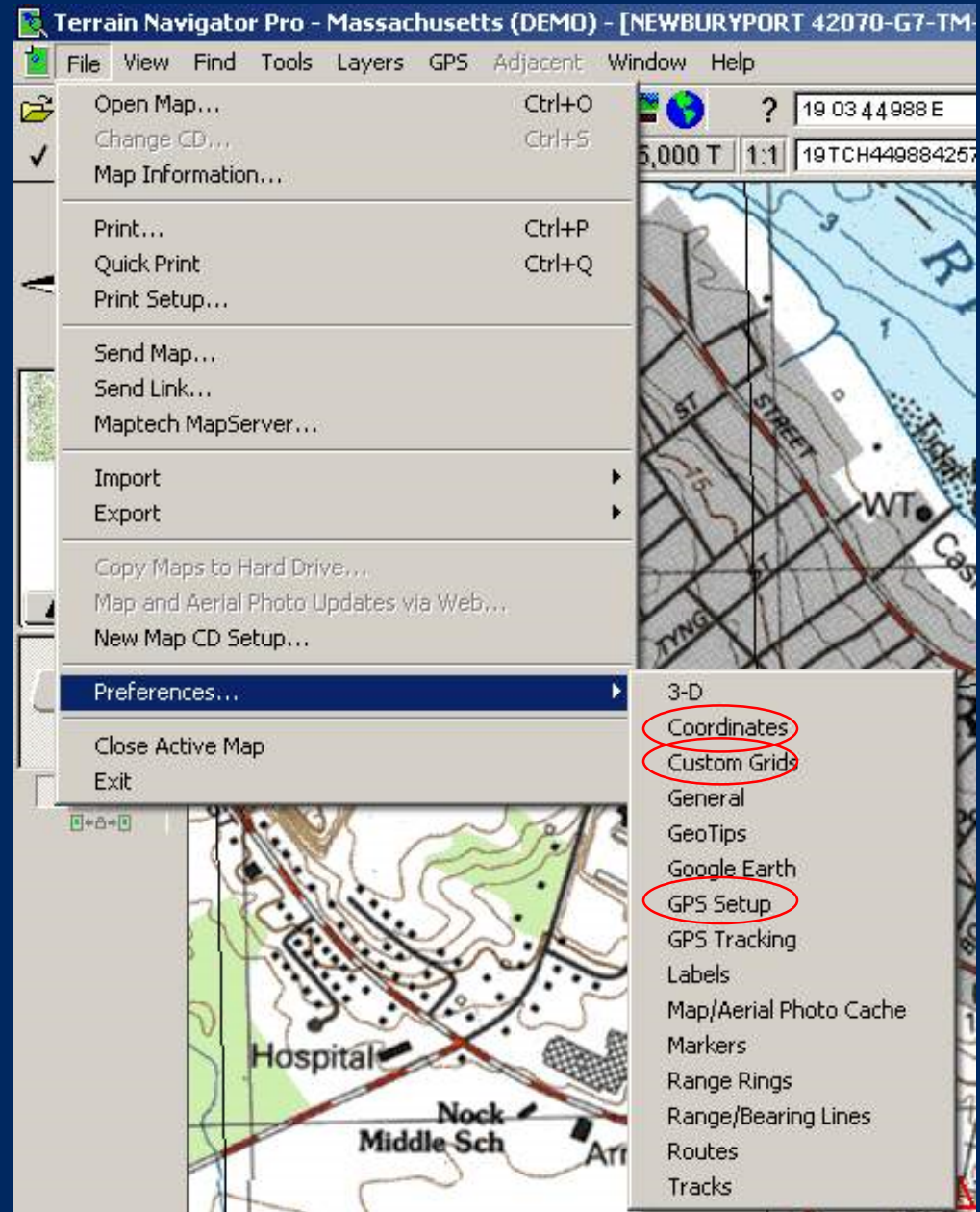
Main Screen = Many Buttons

- | | | | |
|-----------------|------------------------|-----------------------------|-------------------------|
| 1. Map Selector | 10. Label Tool | 19. Information Tool | 28. Primary Coordinates |
| 2. Print | 11. GeoPin Tool | 20. Layer Size & Visibility | 29. Primary Datum |
| 3. Preferences | 12. Measure (straight) | 21. Toggle Layers | 30. Elevation |
| 4. Quick Print | 13. Measure (curved) | 22. Toggle Seamless View | 31. Alt Coordinates |
| 5. Find | 14. Marker | 23. Toggle 3D View | 32. Alt Datum |
| 6. Zoom In | 15. Route | 24. Sync with Google Earth | 33. Pan |
| 7. Zoom Out | 16. Range Rings | 25. Set Map Scale | 34. Map Overview |
| 8. Drag Tool | 17. Range/Bearing Tool | 26. Help | |
| 9. Center Tool | 18. Track Tool | 27. Set Scale | |



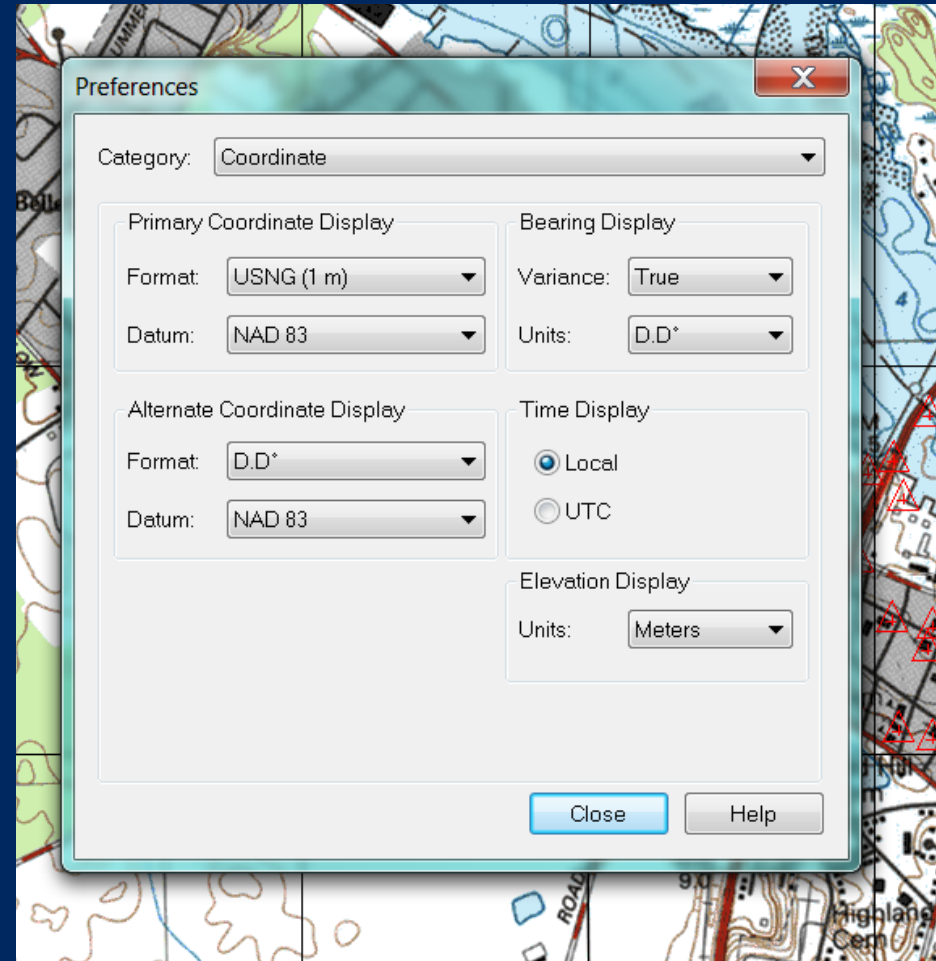
Basic Settings

- Check before each use
 - Coordinates
 - GPS
 - Custom Grid



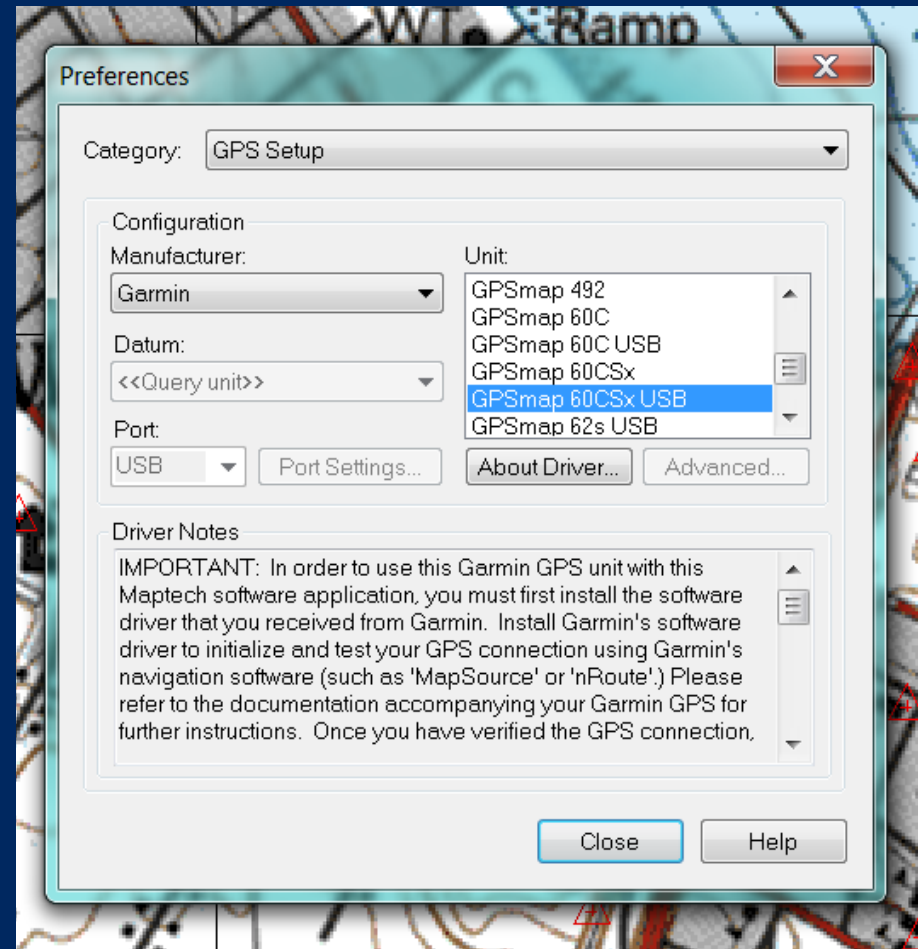
Basic Settings – Coordinates

- Go to File/Preferences
- Primary Coordinates
 - USNG / NAD 83
- Alternate Coordinates
 - D.D° / NAD 83
- Bearing
 - True / D.D°
- Local Time
- Elevation
 - Meters



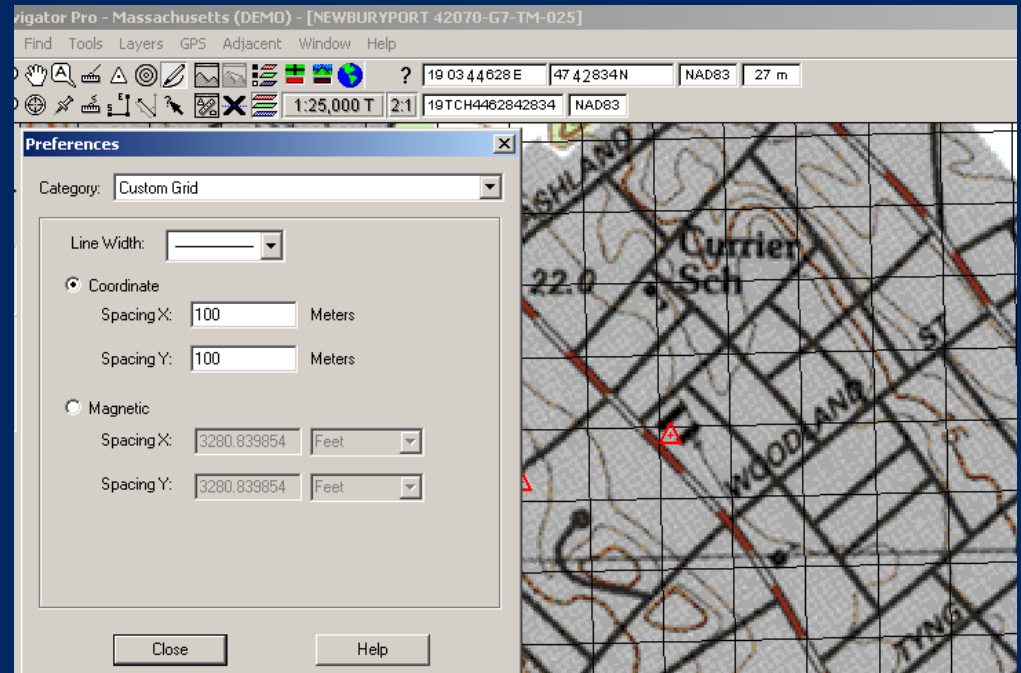
Basic Settings - GPS

- Go to GPS/Setup
- Make sure the unit you plan to use is selected.



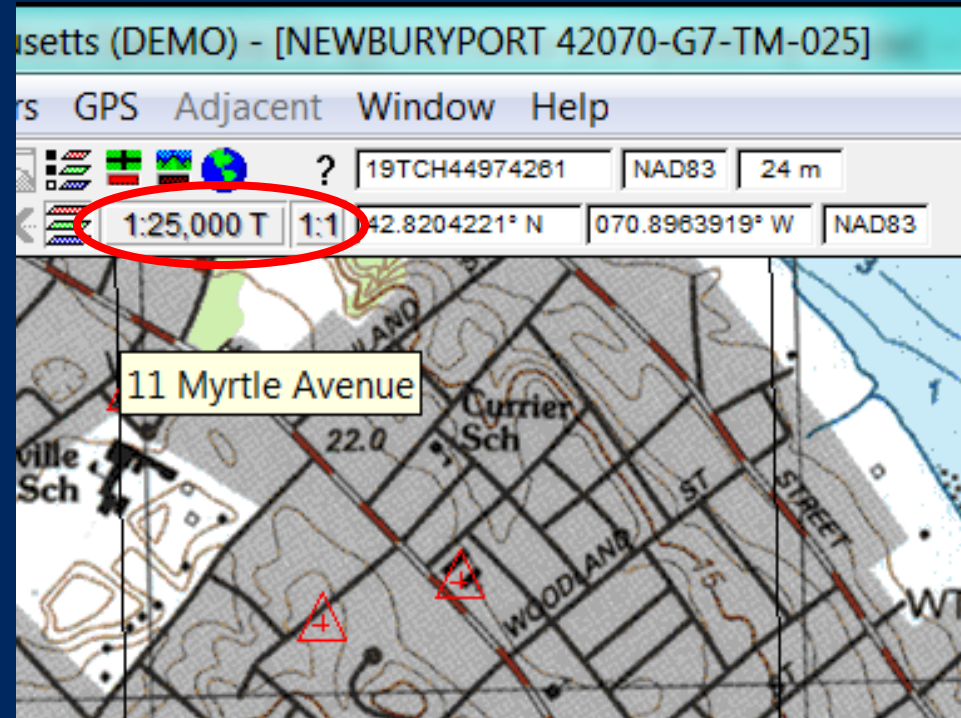
Basic Settings – Custom Grid

- Go to:
 - File /
Preferences /
Custom Grids
- Set to 1000 x 1000
meters



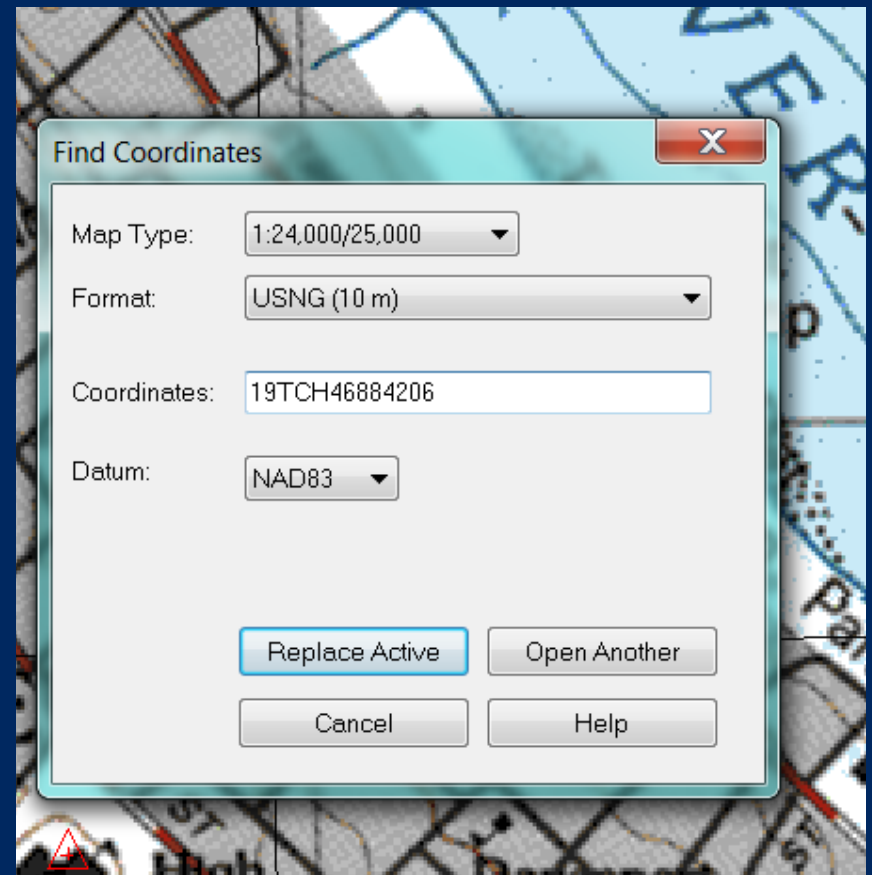
Map Types & Scales

- Common Map Scales
 - 1:25,000 with topo
 - 1:12,000 with aerial
(must have internet connection or cached data)
- Zoom Level
 - 2:1 is maximum
 - 4:1 is minimum
- Select 1:25,000 & 1:1



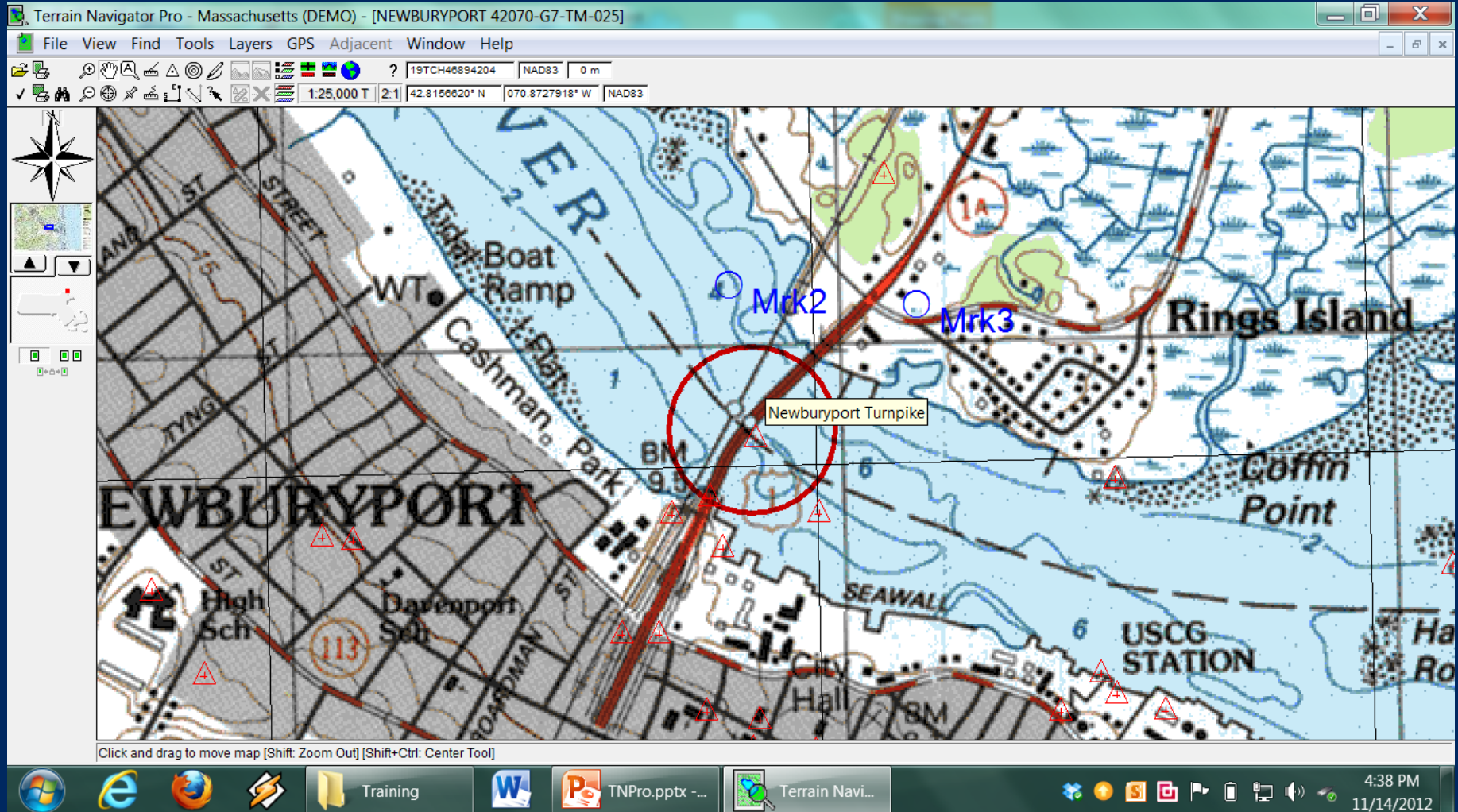
Find Coordinates

- Go to Find / Coordinates
- Type 19TCH46884206 and press Enter
- What's there?



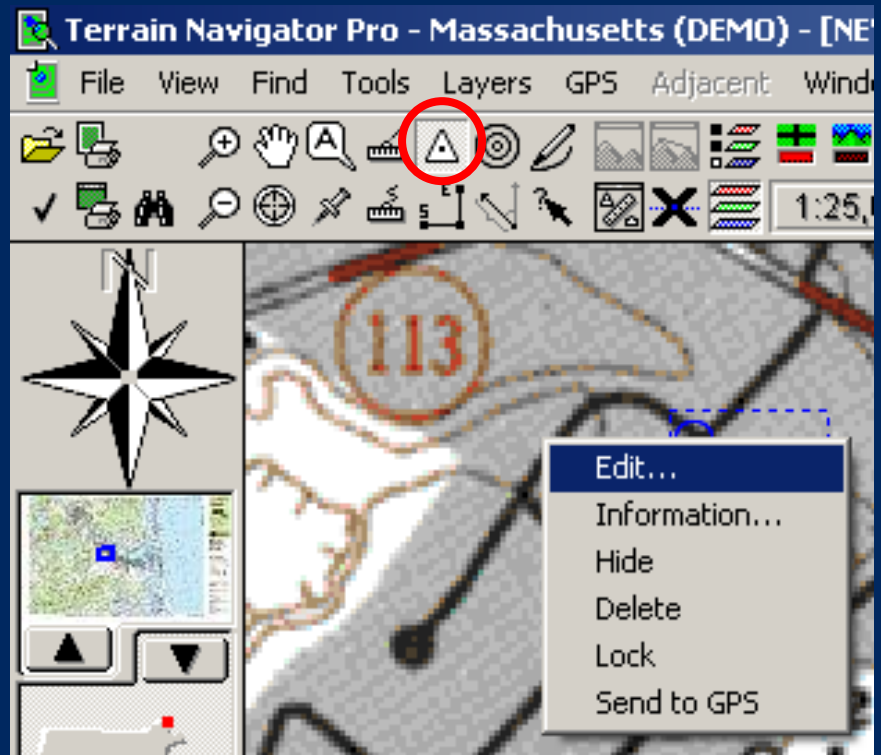
Find Coordinates

- The map should center on the Newbury Turnpike



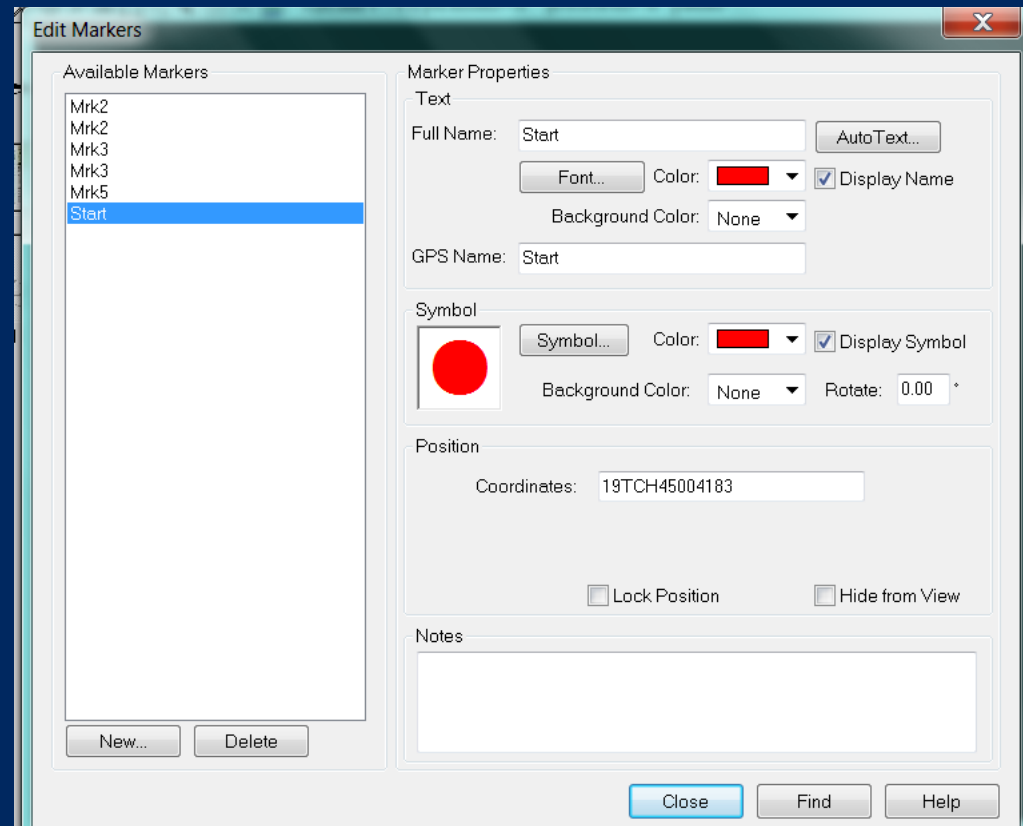
Creating and Editing Markers

- Select the *Marker Tool* and click on desired marker location
- Right click on new marker for options
 - Edit
 - Delete
 - Send to GPS
 - Etc
- Works for Tracks, Routes, etc



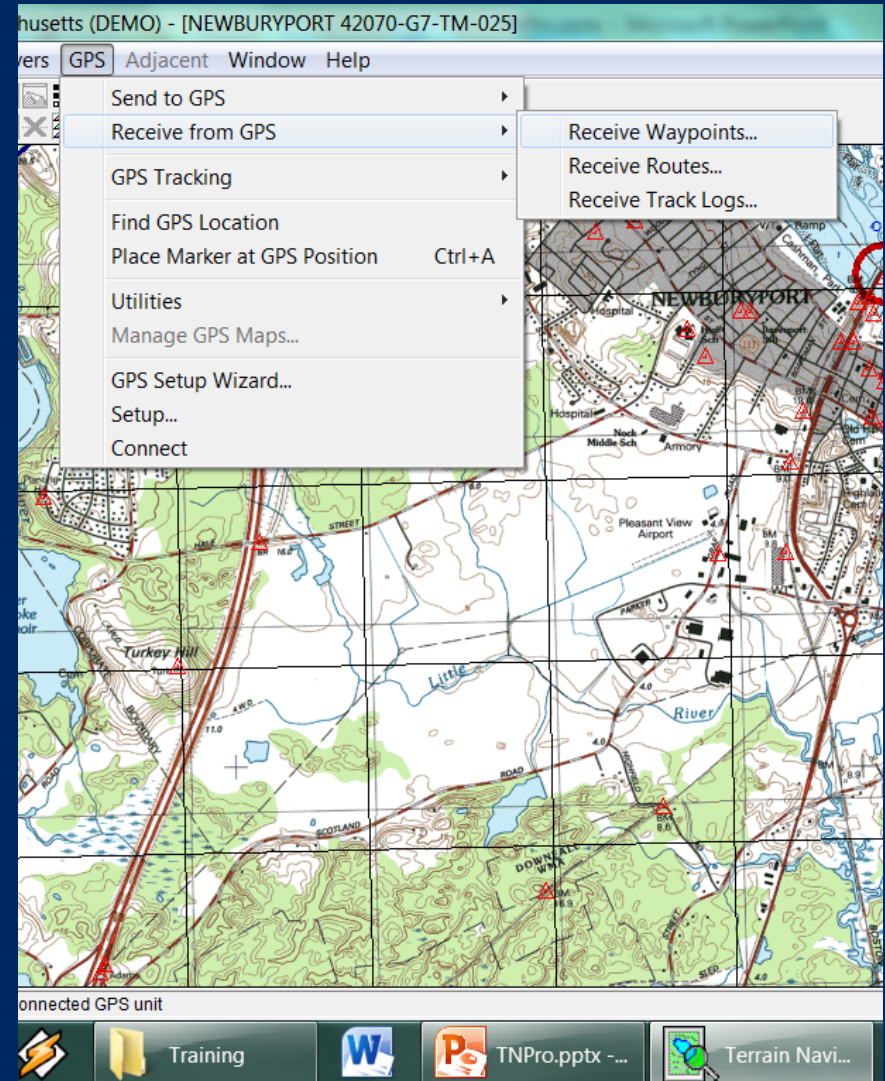
Edit Marker Menu

- Right click the marker and select *Edit*
- Use to edit name, color, comments, coordinates, etc
- Changing Coordinates will move the marker's position on the map
- Show/Hide from view



Downloading GPS Data

- Connect the GPS unit via USB cable & power on
- Go to *GPS / Receive from GPS*
- Select Routes, waypoint, or tracks as appropriate (must be downloaded separately)



Printing

Print - Old Style Terrain Navigator Page with Grid

Print Export... Close Help

«« Print Preview »» Export Preview

Properties Pages Printer/File Templates

Page Blocks

Text - Datum: [Horizontal Datum Short]
Text - [Copyright]
Text - Name: [Map Name] Date: [Date] ...
Text - Location: [Map Center]
Compass
Scale
Map

Blocks: << Choose a page block to insert >>

Frame

Style: Single Color: Bkg:

Map

Source: Topographic (1:24,000) Seamless

Size: Scale 1: 24000 Update

Center: 19TCH45054196 ...

Format: <<Same as Primary>> <<Primary>>

Layers

☒ Print layers: Select layers...

Small Large

Name: NEWBURYPORT
Date: 11/14/12
Scale: 1 inch = 2,000 ft.



Training



TNPro.pptx - ...



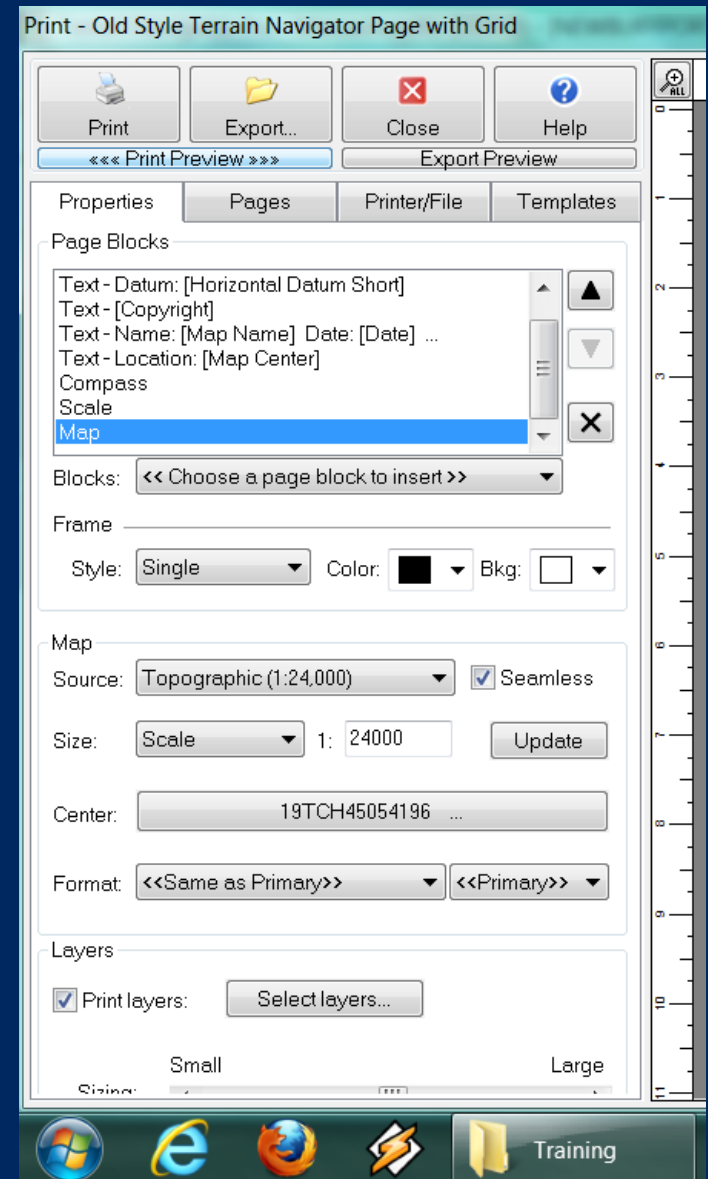
Terrain Navi...



4:57 PM
11/14/2012

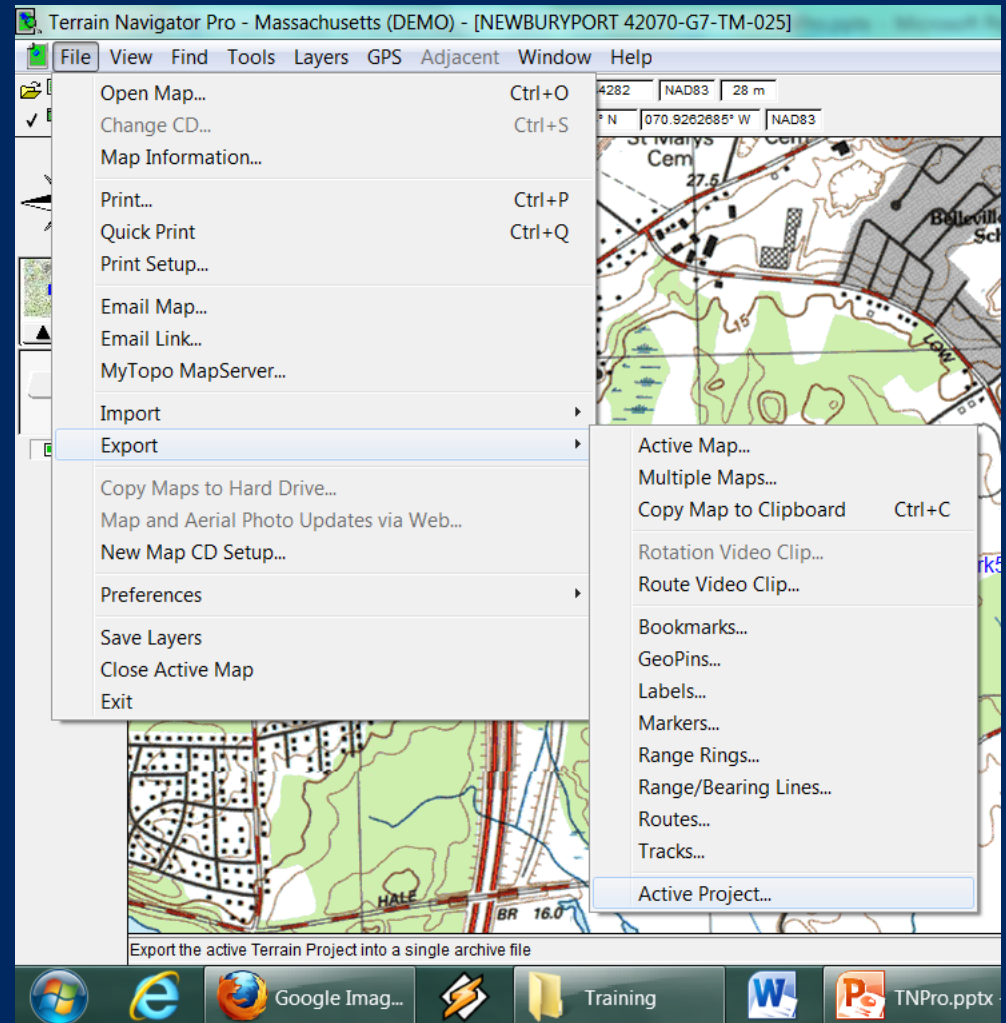
Printing

- Go to File/Print
- Properties
 - Set Map Type, scale, layers, etc
- Printer/File
 - Select printer or output type
- Templates
 - Use *Old Style TN with Grid*
- Export
 - Create softcopy
- To pan left click on map, hold, and drag



Export a Map Project

- Go to File/Export/Active Project
- This will save all tracks, waypoints, routes, etc



Tips and Tricks

- Practice
- Practice
- Practice



For more information, head to our
website:
www.searchdogs.org